



# RETHINKING THE COLLECTIVE: Renovation strategies for strengthening the Tulou community

John Lin  
Department of Architecture

July 9<sup>th</sup> 2020

# Summary of the Impact

- This project addresses the activation of abandoned Tulou in Fujian Province, by implementing new collective programs into the historic buildings.
- The impact arising from the construction of two newly built Tulou adaptive structure in Shizhong, China can be demonstrated by measuring the impact of alternative renovation strategies, change the views of the local community about the value of their Tulous, increase public awareness towards Tulou and potentially influence policy on Tulou preservation.



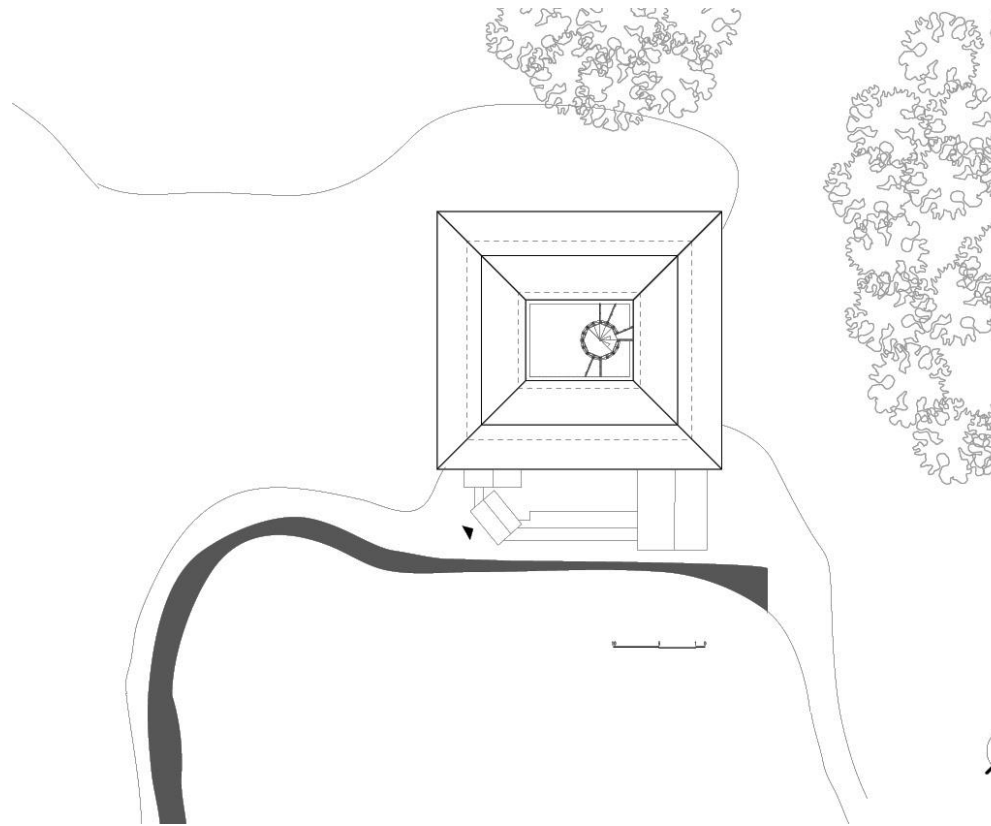
# Renovation strategies Tower





# Renovation strategies

## Tower

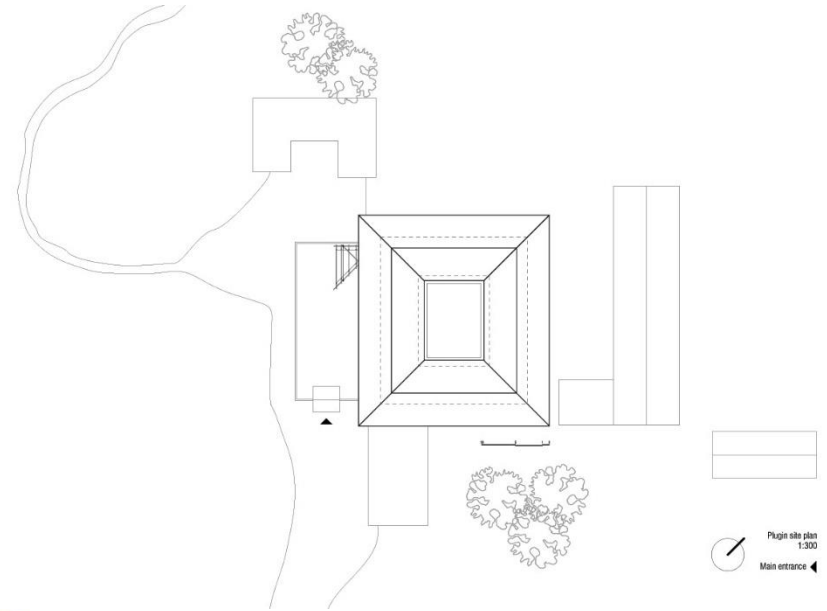




# Renovation strategies: Plug-In



# Renovation strategies: Plug-In

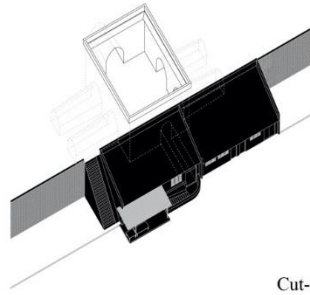




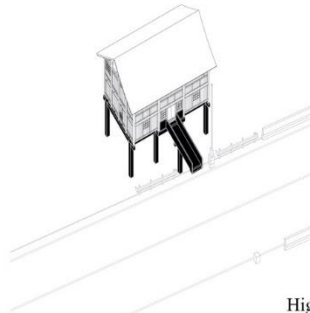


# Underpinning Research: GRF funded research : Renovation Toolbox: Strategies for adapting vernacular architecture in rural China.

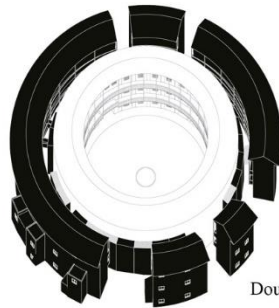
- The research include case studies of radical transformation to traditional typologies from three different regions in China.
- Three regions are Fujian(Tulou), Shaanxi(Dug-out) and Guizhou (Wooden houses)
- The ongoing research starts at August 2017 and the duration is 24 month.
- Principal Investigator: Lin Chun Han, John



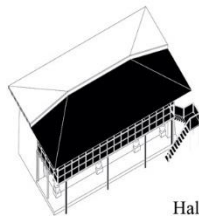
Cut-Away House



Highway House



Double House

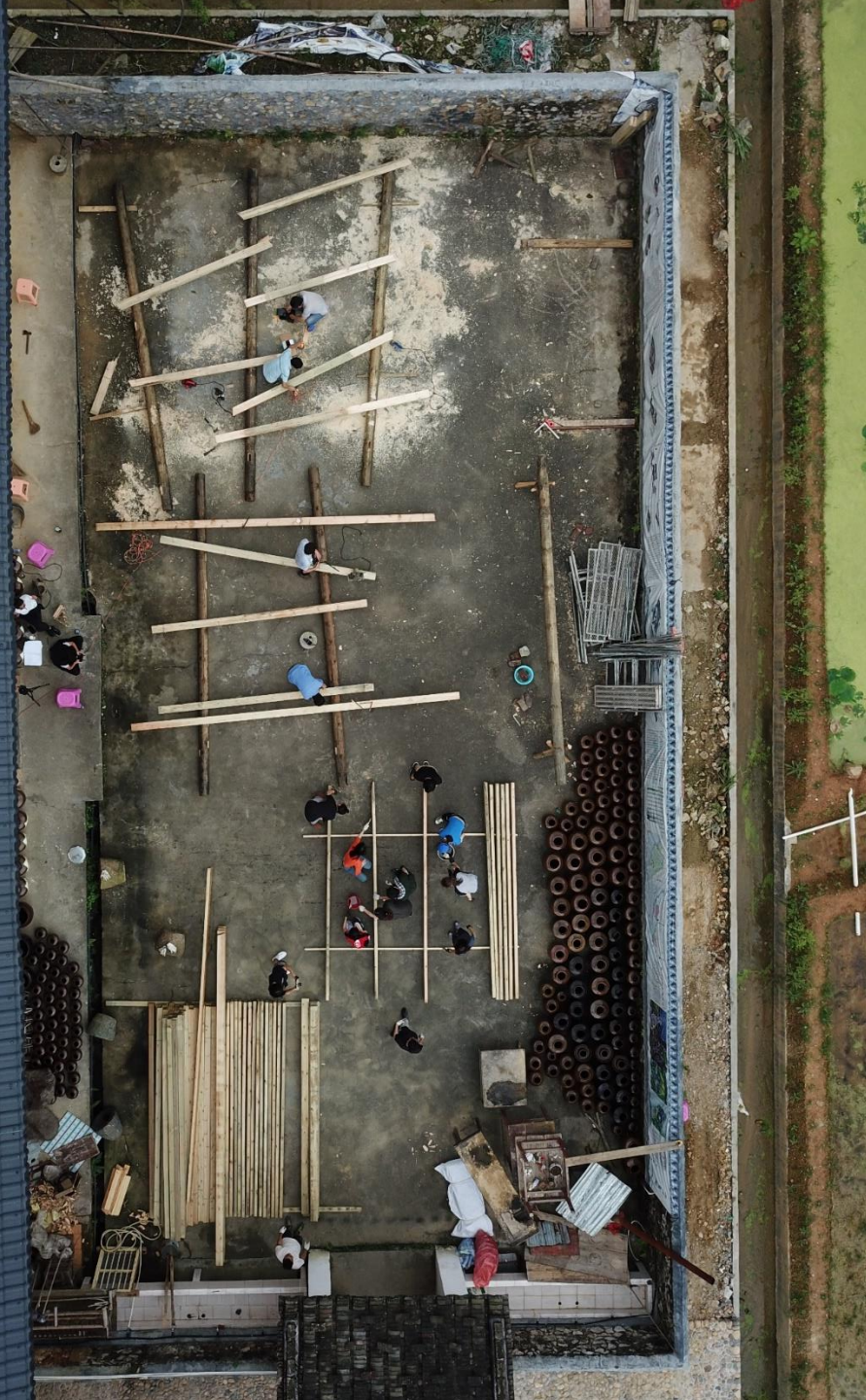


Half and Half House

# Underpinning Research: A Book: As Found Houses. Experiments from self- builders in rural China

- The book has completed an architectural reading of 20 vernacular buildings in rural China.
- The book will be published in 2020 by Applied Research and Design Publishing.
- Authors: Lin Chun Han, John and Sony Devabhaktuni





# Underpinning Research: Service Learning: Jockey Club HKU Rural-Urban Design Project

- The project was initiated to empower students by creating a space for knowledge exchange between 40 students from different Hong Kong institutions, local villagers and builders.
- The adaptive structures built in Tulou was partially funded by JCHK.
- The ongoing research starts at August 2017 and the duration is 36 month.



## Underpinning Research: Year 4 Studio: From rural to urban: redefining the collective

- The design studio investigated the evolution of housing typology in the context of Chinese rural to urban transformation.
- Through studio, students analysed and mapped a Tulou community as a way documenting the overall context and its changes.
- The course was taken place on fall 2018 and spring 2019.



# Engagement:

## Students, carpenters and local Tulou residents

- The plug-in and tower were built by students in collaboration with local carpenters.
- The students from HKU and The Hong Kong Design Institute engaged with both carpenters and local residents to learn about both traditional timber craftsmanship and the challenges that villagers and their Tulous face when confronted with urbanization.
- Students met with local government and local residents to present their designs to learn directly from the stakeholders



# Engagement:

## Students, carpenters and local Tulou residents

- Three months after construction, a revisit trip was organized and interviews to the villagers showed a general satisfaction with the new public programs brought by the structure.
- New forms of collectivity are not only expressed by the physical adaptations of Tulou, but reveal themselves in the collaborative effort of different people and institutions exchanging diverse forms of knowledge.





# Engagement:

Local governments :Lantian Village Government,  
Shizhong County Government and Longyan Xinluo  
District Government

- The local governments provided funds and support for two structures.
- Shizhong County Government has received a donation of 1 millions RMB to continue renovate Zhenchun Lou(Tower) as a museum for Chinese telegram technology since this Tulou was used as a telegram station during civil war in 1930s.





## Impact Achieved: Impact of providing alternative renovation strategies: Tower

- The Tower rethinks the public space of Tulou by raising up the traditional collective courtyard and connecting each floor through a spiral stairway to the sky. Zhenchun Lou has been abandoned for decades until Tower was built.
- The Tower is not only provide new public space for the villagers but also repurpose Zhenchun Lou for new function: a museum.







## Impact Achieved: Impact of providing alternative renovation strategies: Plug-In

- The Plug-in transforms a small window into a new entrance, introducing a public library to the existing dormitory in Yulou Lou.
- Between October 2019 and January 2020, 8 educational camps have been taken place in the Plug-in. It offered a space of creative play for 635 students.





## Impact Achieved: Impact of changing views of the local community about the value of their Tulous

- 18 villagers of Lantian Village were interviewed. 18 of them agreed strongly that visitors have increased and their business has been benefited.
- According to the villager head, the visitor's number has increased 7500 in two month after the construction completed.



## 2 DECEMBER, 2019

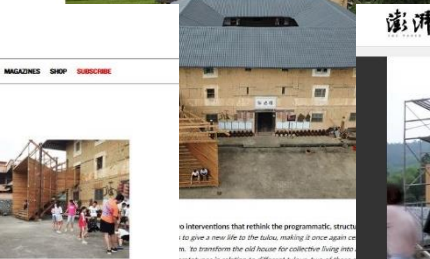
The 'magical and inventive' winning Spanish project was selected by our panel of judges, consisting of Roz Barr, director and founder of Roz Barr Architects, Hugh Strange, founder of Hugh Strange Architects, and Catherine Slessor, writer, critic and former editor of *The Architectural Review*.

**Winner**

**Highly Commended**

**Commended**

OMR Art Gallery, Mexico, by Max von Werz, Mateo Riestra & José Arnaud-Bello  
Qingyuan Young Professors' Club, Zhejiang University, China, by the Architectural  
Design and Research Institute of Zhejiang University  
Estació Enològica, Spain, by Aulets Arquitectes



- Since July 2019, the coverage of Rethinking the Collective in the mainstream media has been extensive, including newspaper, TV and online publication.



## Impact Achieved: Impact of increasing public awareness towards Tulou

- The project organized a workshop & exhibition in PMQ on October 26-27, 2019. The exhibition demonstrates the impact design can have and that the process of building itself is a method to bring people together for collective action.





New into Old 2019  
Highly Commended

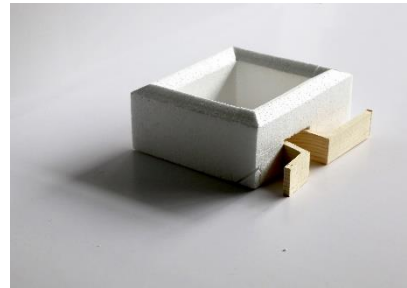
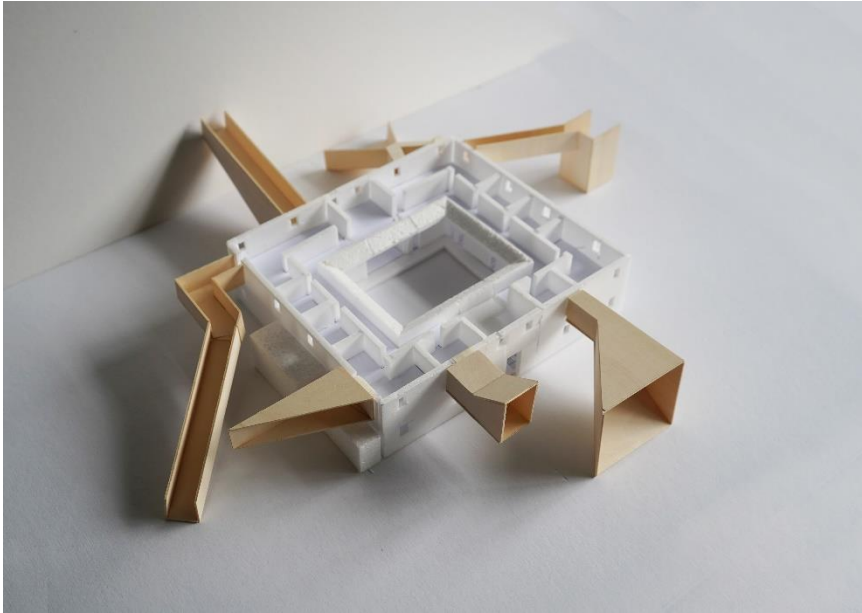
The Architectural Review

Rural Urban  
Framework +  
University of  
Hong Kong  
Tulou tower  
and plug-in  
Lantian village  
China

NEW  
INTO  
OLD  
AWARDS

## Impact Achieved: Impact of increasing public awareness towards Tulou

- Plug-In and Tower are Highly Commended for The Architectural Review Award New Into Old 2019



## Near future plan:

- Research of renovation strategies in rural China continues.
- Tower and Zhenchun Lou will be renovated into a museum of for Chinese telegram technology in 2022.
- Plug-in, which is part of Shanfu Ecological Agriculture Science Base- a venue for experiential educational programmes for elementary school students, will expand its service to students from middle schools and high schools in the end of 2021.
- Local governments recommend us more Tulous for future transformations : Yuqing Lou, Zhehua Lou and Yuxiang Lou.